

TYPE	NO.	LEVEL	SIZE	TYPE	NO.	LEVEL	SIZE
D	1	200	2400x2000	W1	450	2005	1500x1400
D1	1	200	1100x1000	W1A	900	2005	1500x1400
D2	1	200	1100x1000	W1B	900	2005	1500x1400
D3	1	200	1100x1000	W1C	900	2005	1500x1400
D4	1	200	1100x1000	W1D	900	2005	1500x1400
D5	1	200	1100x1000	W1E	900	2005	1500x1400
D6	1	200	1100x1000	W1F	900	2005	1500x1400
D7	1	200	1100x1000	W1G	900	2005	1500x1400
D8	1	200	1100x1000	W1H	900	2005	1500x1400
D9	1	200	1100x1000	W1I	900	2005	1500x1400
D10	1	200	1100x1000	W1J	900	2005	1500x1400
D11	1	200	1100x1000	W1K	900	2005	1500x1400
D12	1	200	1100x1000	W1L	900	2005	1500x1400
D13	1	200	1100x1000	W1M	900	2005	1500x1400
D14	1	200	1100x1000	W1N	900	2005	1500x1400
D15	1	200	1100x1000	W1O	900	2005	1500x1400
D16	1	200	1100x1000	W1P	900	2005	1500x1400
D17	1	200	1100x1000	W1Q	900	2005	1500x1400
D18	1	200	1100x1000	W1R	900	2005	1500x1400
D19	1	200	1100x1000	W1S	900	2005	1500x1400
D20	1	200	1100x1000	W1T	900	2005	1500x1400
D21	1	200	1100x1000	W1U	900	2005	1500x1400
D22	1	200	1100x1000	W1V	900	2005	1500x1400
D23	1	200	1100x1000	W1W	900	2005	1500x1400
D24	1	200	1100x1000	W1X	900	2005	1500x1400
D25	1	200	1100x1000	W1Y	900	2005	1500x1400
D26	1	200	1100x1000	W1Z	900	2005	1500x1400
D27	1	200	1100x1000	W2A	900	2005	1500x1400
D28	1	200	1100x1000	W2B	900	2005	1500x1400
D29	1	200	1100x1000	W2C	900	2005	1500x1400
D30	1	200	1100x1000	W2D	900	2005	1500x1400
D31	1	200	1100x1000	W2E	900	2005	1500x1400
D32	1	200	1100x1000	W2F	900	2005	1500x1400
D33	1	200	1100x1000	W2G	900	2005	1500x1400
D34	1	200	1100x1000	W2H	900	2005	1500x1400
D35	1	200	1100x1000	W2I	900	2005	1500x1400
D36	1	200	1100x1000	W2J	900	2005	1500x1400
D37	1	200	1100x1000	W2K	900	2005	1500x1400
D38	1	200	1100x1000	W2L	900	2005	1500x1400
D39	1	200	1100x1000	W2M	900	2005	1500x1400
D40	1	200	1100x1000	W2N	900	2005	1500x1400
D41	1	200	1100x1000	W2O	900	2005	1500x1400
D42	1	200	1100x1000	W2P	900	2005	1500x1400
D43	1	200	1100x1000	W2Q	900	2005	1500x1400
D44	1	200	1100x1000	W2R	900	2005	1500x1400
D45	1	200	1100x1000	W2S	900	2005	1500x1400
D46	1	200	1100x1000	W2T	900	2005	1500x1400
D47	1	200	1100x1000	W2U	900	2005	1500x1400
D48	1	200	1100x1000	W2V	900	2005	1500x1400
D49	1	200	1100x1000	W2W	900	2005	1500x1400
D50	1	200	1100x1000	W2X	900	2005	1500x1400
D51	1	200	1100x1000	W2Y	900	2005	1500x1400
D52	1	200	1100x1000	W2Z	900	2005	1500x1400
D53	1	200	1100x1000	W3A	900	2005	1500x1400
D54	1	200	1100x1000	W3B	900	2005	1500x1400
D55	1	200	1100x1000	W3C	900	2005	1500x1400
D56	1	200	1100x1000	W3D	900	2005	1500x1400
D57	1	200	1100x1000	W3E	900	2005	1500x1400
D58	1	200	1100x1000	W3F	900	2005	1500x1400
D59	1	200	1100x1000	W3G	900	2005	1500x1400
D60	1	200	1100x1000	W3H	900	2005	1500x1400
D61	1	200	1100x1000	W3I	900	2005	1500x1400
D62	1	200	1100x1000	W3J	900	2005	1500x1400
D63	1	200	1100x1000	W3K	900	2005	1500x1400
D64	1	200	1100x1000	W3L	900	2005	1500x1400
D65	1	200	1100x1000	W3M	900	2005	1500x1400
D66	1	200	1100x1000	W3N	900	2005	1500x1400
D67	1	200	1100x1000	W3O	900	2005	1500x1400
D68	1	200	1100x1000	W3P	900	2005	1500x1400
D69	1	200	1100x1000	W3Q	900	2005	1500x1400
D70	1	200	1100x1000	W3R	900	2005	1500x1400
D71	1	200	1100x1000	W3S	900	2005	1500x1400
D72	1	200	1100x1000	W3T	900	2005	1500x1400
D73	1	200	1100x1000	W3U	900	2005	1500x1400
D74	1	200	1100x1000	W3V	900	2005	1500x1400
D75	1	200	1100x1000	W3W	900	2005	1500x1400
D76	1	200	1100x1000	W3X	900	2005	1500x1400
D77	1	200	1100x1000	W3Y	900	2005	1500x1400
D78	1	200	1100x1000	W3Z	900	2005	1500x1400
D79	1	200	1100x1000	W4A	900	2005	1500x1400
D80	1	200	1100x1000	W4B	900	2005	1500x1400
D81	1	200	1100x1000	W4C	900	2005	1500x1400
D82	1	200	1100x1000	W4D	900	2005	1500x1400
D83	1	200	1100x1000	W4E	900	2005	1500x1400
D84	1	200	1100x1000	W4F	900	2005	1500x1400
D85	1	200	1100x1000	W4G	900	2005	1500x1400
D86	1	200	1100x1000	W4H	900	2005	1500x1400
D87	1	200	1100x1000	W4I	900	2005	1500x1400
D88	1	200	1100x1000	W4J	900	2005	1500x1400
D89	1	200	1100x1000	W4K	900	2005	1500x1400
D90	1	200	1100x1000	W4L	900	2005	1500x1400
D91	1	200	1100x1000	W4M	900	2005	1500x1400
D92	1	200	1100x1000	W4N	900	2005	1500x1400
D93	1	200	1100x1000	W4O	900	2005	1500x1400
D94	1	200	1100x1000	W4P	900	2005	1500x1400
D95	1	200	1100x1000	W4Q	900	2005	1500x1400
D96	1	200	1100x1000	W4R	900	2005	1500x1400
D97	1	200	1100x1000	W4S	900	2005	1500x1400
D98	1	200	1100x1000	W4T	900	2005	1500x1400
D99	1	200	1100x1000	W4U	900	2005	1500x1400
D100	1	200	1100x1000	W4V	900	2005	1500x1400

**SCHEDULE OF DOORS & WINDOWS**

1. ALL DIMENSIONS ARE IN MM UNLESS OTHERWISE SPECIFIED.  
2. ALL EXTERIOR WALLS 150 MM THK CONCRETE WALL AND 200 BRICK WALLS ON 150 MM THK CONCRETE SLAB UNLESS OTHERWISE SPECIFIED.  
3. EXTERIOR WALLS 150 MM THK CONCRETE WALL AND 200 BRICK WALLS ON 150 MM THK CONCRETE SLAB UNLESS OTHERWISE SPECIFIED.  
4. EXTERIOR SAND PLASTER TO 150 MM THK ON OUTSIDE & INSIDE WALLS ON 150 MM THK CONCRETE WALL & 200 BRICK WALLS ON 150 MM THK CONCRETE SLAB UNLESS OTHERWISE SPECIFIED.  
5. WOOD STAIR CASES FOR COMMONS, STAIR LIFTS & STAIRS INCLUDING DISTRIBUTORS & HANDRAILS. 150 MM THK WOODEN STAIR CASES TO BE BLAZED AS PER SECTION.  
6. SHOWER & PLUMBING FITTING AS PER COMPLETE AS PER SECTION.

**SIGNATURE OF OWNER**  
**SIGNATURE OF ARCHITECT**  
**SIGNATURE OF STRUCTURAL ENGINEER**

**RAJ KUMAR AGARWAL**  
**Architect**  
**Member of Council of Architects**  
**Architect No. 7947/19940**

**DEEPAK PRINGO**  
**Structural Engineer**  
**Member of Council of Engineers**  
**Engineer No. 12772 of KVC**

**CERTIFICATE OF STRUCTURAL ENGINEER**  
I hereby certify that the site has been inspected personally and I am satisfied that the design and construction of the building is in accordance with the provisions of the Building Rules, 2009 and the provisions of the Indian Standards, 1987 and 1999. I also certify that the design and construction of the building is in accordance with the provisions of the Building Rules, 2009 and the provisions of the Indian Standards, 1987 and 1999. I also certify that the design and construction of the building is in accordance with the provisions of the Building Rules, 2009 and the provisions of the Indian Standards, 1987 and 1999.

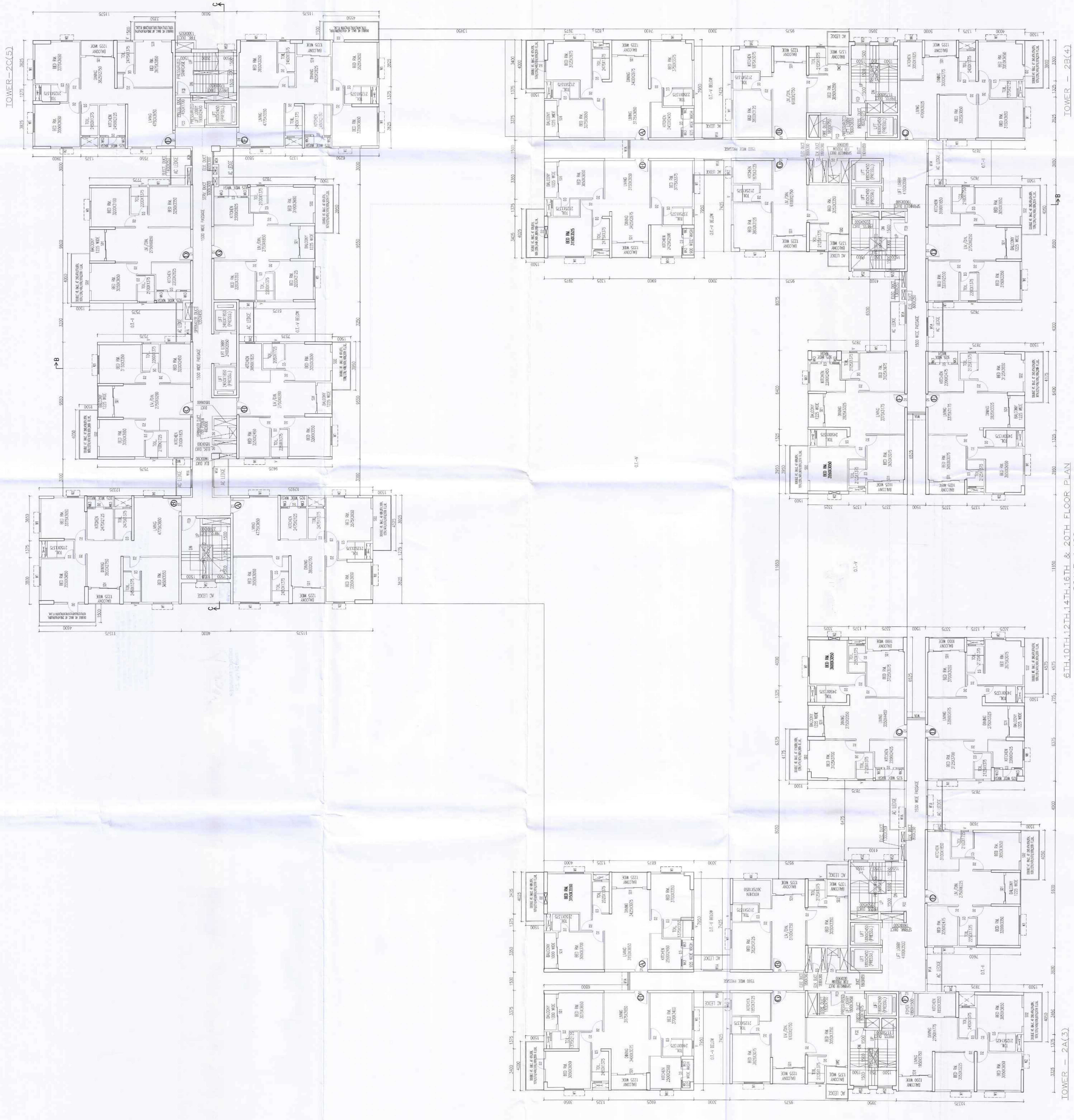
**SIGNATURE OF STRUCTURAL ENGINEER**  
**DEEPAK PRINGO**  
**Structural Engineer**  
**Member of Council of Engineers**  
**Engineer No. 12772 of KVC**

**SIGNATURE OF ARCHITECT**  
**RAJ KUMAR AGARWAL**  
**Architect**  
**Member of Council of Architects**  
**Architect No. 7947/19940**

**SIGNATURE OF GEO-TECHNICAL ENGINEER**  
**ALOK ROY**  
**Geotechnical Engineer**  
**Member of Council of Engineers**  
**Engineer No. 10111 of KVC**

**SIGNATURE OF GEO-TECHNICAL ENGINEER**  
**ALOK ROY**  
**Geotechnical Engineer**  
**Member of Council of Engineers**  
**Engineer No. 10111 of KVC**

**PROJECT**  
**6TH, 10TH, 14TH, 16TH & 20TH FLOOR PLAN**  
**SCALE**  
**1:100**



**TOWER - 2C(5)** **TOWER - 2B(4)**  
**6TH, 10TH, 14TH, 16TH & 20TH FLOOR PLAN**  
**SCALE=1:100**

